

Vidar Axle Counting Camera – Image-Based Axle Counting with a Single, Intelligent Camera Imaging

Vidar Axle Counting Camera	
Resolution	Sensor 1 & 2: 1.5MP (1440x1080)
Max FPS	Sensor 1 & 2: 120 @ 720p
Sensor	Sensor 1: color + Allpass filter, global shutter Sensor 2: black & white + IR Bypass filter, global shutter
Day/Night switch	Automatic brightness control with predefined traffic environments or manual
Lens	Motorized zoom and focus, remotely adjustable
Lens mount	Custom mount
Angle of View	Optics 1 & 2: Wide: 79.2° x 63.7° Tele: 30.9° x 23.4°
Optical Zoom	Optics 1 & 2: 3x
Focal length	Optics 1 & 2: Variable 3–9 mm
Axle Counting	Custom sensor configurations (e.g., resolution, color or b/w), optics (zoom or fix, focal length, etc.) and filters (IR-band, IR-Cut, All Pass, and Polarized) are available upon request.
OCR - ACCR range	1.5 – 8 m (4.92–26.25 feet)
Vehicle speed range (at optimal conditions)	0 km/h – 120+ km/h / 0 mph – 74.5+ mph
Maximum number of lanes	1
Onboard Intelligence	The camera's range can be tailored with different lens and sensor combinations to meet specific project requirements.
Carmen® ANPR	No
GDS compliance	Yes
Axle counting data	Number and position of wheels (lifted and retracted axles incl.)
Vehicle categorization	Yes
Illumination	Additional AI-based features such as Container Code Recognition or any other OCR tasks, etc. can be enabled for selected projects
Wavelength	White LED + 850 nm IR
Number of LEDs	12 high-power LEDs
Illumination modes	Synchronized or continuous
Illumination beam-angle	22°
Variable intensity	Adjustable in 100 increments, parity flash (different intensity for odd and even frames)
Processing & I/O	Any required wavelength (white, 760nm IR, 850nm IR, etc.) even mixed with different beam-angles are also available upon request.
Communication protocols	ONVIF, ARP, TCP/IP, DHCP, NTP, FTP, HTTP, RTSP, HTTPS, SFTP, DNS, SNMP, SSL/TLS, NTCIP
I/O ports	12-pin (External Illuminator, UART, GPIO, USB, RS232)
In-built laser trigger	8 mRad point laser
Laser wavelength & safety class	905 nm CLASS I (60825-1 2014)
Electrical Data	
Power requirement	24 – 28 V AC*; min. 2.5A
Typical power consumption	18 W
Mechanical Data	*36 V DC, when galvanically isolated, double-insulated power supply is in use
Operating temperature*	-45°C – +70°C (-49°F – +158°F)
IP & IK rating	IP67, IK10**
Dimensions with bracket (LxWxH)	298 x 158 x 377 mm / 11.73" x 6.22" x 14.84"
Weight	5.3 kg / 11.68 lbs
In the box	Camera, bracket, shield

Accessories	** For IK10 protection an additional accessory component might be required
M12 power cable, Ethernet cable, Junction Box, External IR-light, External GPS, I/O cable	

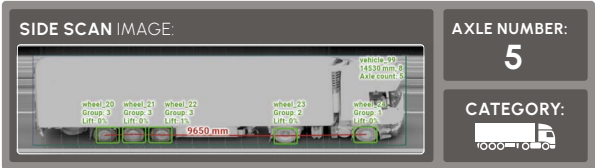
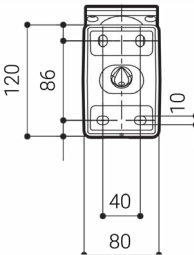
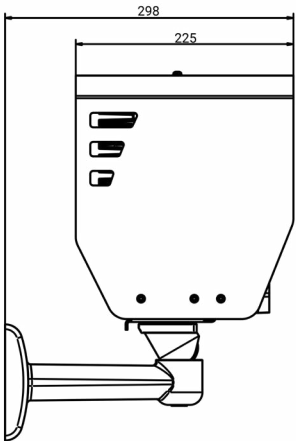
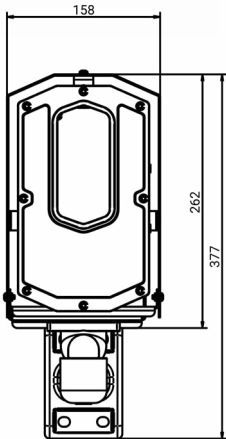
Certificate	Made in EU, NDAA compliant
-------------	----------------------------



www.adaptiverecognition.com

· dual motorized optics · high-performance 4-core OCR processor · built-in laser trigger · up to 120 FPS · 850 nm IR Illumination · spectacular night-time performance · natively GDS-ready

Technical specifications are subject to change without prior notice. For any specific requirements beyond our standard products, custom configurations are available. Please contact our sales team to discuss your project needs and explore tailored solutions. We are happy to help.



3-year warranty
Made in EU

© Copyright Adaptive Recognition Inc.
All rights reserved.

Release date: 07/02/2025